

SLOW LABELが提案する、新時代のアートの楽しみ方！

The value of art in the new era, proposed by SLOW LABEL

このプログラムは、音楽会をひらくプロセスで、社会全体の「アクセシビリティ(人権)」と「サステナビリティ(環境)」の意識向上をめざす、ソーシャルアクションです。演奏者、衣装、舞台美術、お食事、企業メセナなど、音楽会を構成する要素にSDGsなアクションが込められています。

"Earth ∞ Pieces" is a social action aimed at raising awareness about "accessibility" and "sustainability" throughout society, which unfolds through the hosting of a concert. Various elements of the concert —including performers, costumes, scenography, meals, and fundraising— incorporate actions aligned with the Sustainable Development Goals (SDGs).

全ての人が“自分らしく”輝ける世界へ

A world where everyone can shine as themselves

音楽のジャンルやプロアマ問わず、自分の表現や世界を広げるきっかけにしたい方、「病気」「介護」「子育て」「仕事」という様々な事情で誰かと演奏する機会を失った方など、10代～60代までの公募プレイヤーが、音楽家・蓮沼執太が書き起こす「音楽の設計図」をもとに合奏に挑戦します。また、事前のリハーサルを行わない「一日完結型」という、従来の常識を超えた形式を採用し、「完璧」を追求する芸術的価値観がある一方で、それによって「誰かと共奏する機会」を失う人たちを取り残さないことの意義と価値を、今この時代に改めて問います。

For the inaugural world premiere, a diverse range of participants from teenagers to those in their sixties, who have lost opportunities to perform with others due to various circumstances such as illness, caregiving, childcare, and work commitments, joins from across the country. They attempt to perform Beethoven's "Ode to Joy (Symphony No.9)" based on the "blueprint of music" transcribed by Shuta Hasunuma. Adopting a format termed "one-day completion," where no prior rehearsal is conducted, this event challenges the conventional norms by balancing the pursuit of "perfection" as an artistic value with the importance of not leaving behind those who have lost opportunities to perform with others.

> Music Director: Shuta Hasunuma

> Support Musicians: itoken, Chiaki Miura, Ryotaro Miyasaka

> Players: aoinu, Yoshino Iwakawa, Ayase Kamisawa, Emoyan, Kaori, Showji Kawasaki, Carrot yoshie., Yuina Koshio, Aya Kobayashi, Yurie Saito, Yasuo Saeki, Sanochie, Shinnosuke Sahara, Akane Shimada, Kosuke Shimada, Kazuki Takashima, Shigeru Tachiki, Yuki Nakamura, NonNon, Hazuki, Haru, Sahara Fujiwara, Yu Machitera, Meat Suzuki, Shota Miyake, Genshun Yamanouchi, Yui Wago, Kai Watanabe, Chihiro Watanabe

2024.3.16 sat @ ZOU-NO-HANA TERRACE

Public Time …… 14:30-17:00 **Free Admission**

Premium Time … 19:00-20:30 **Reservation Required**

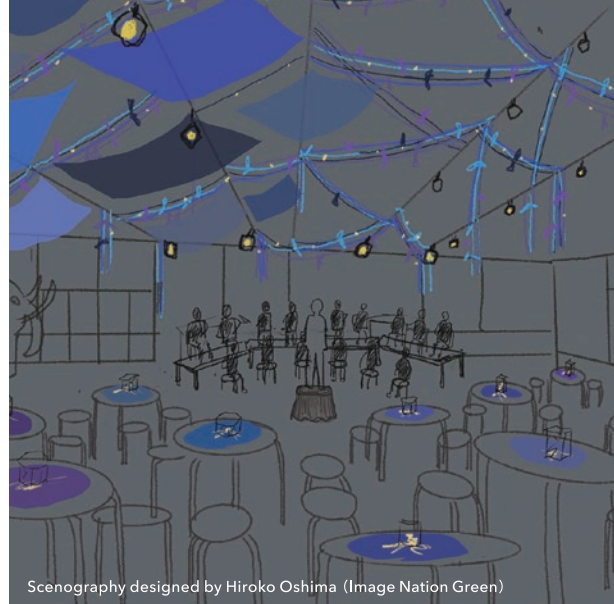
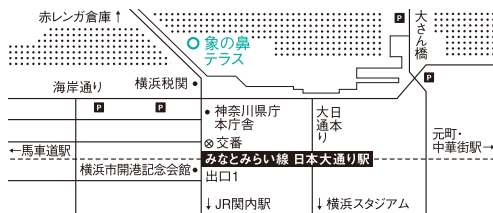


more info

NOTICE | Exhibition & Event

演奏を収録した「音楽」や「映像」は
5月中旬に展示公開予定

Venue :
ZOU-NO-HANA-TERRACE
Sony Park Mini (GINZA)



Scenography designed by Hiroko Oshima (Image Nation Green)



Tie designed by Kumiko Takeda



参考画像:ヨコハマ・パタリエンナーレ2017

CONTACT | © SLOW LABEL. MAIL:ep@slowlabel.info TEL・FAX:045-642-6132

